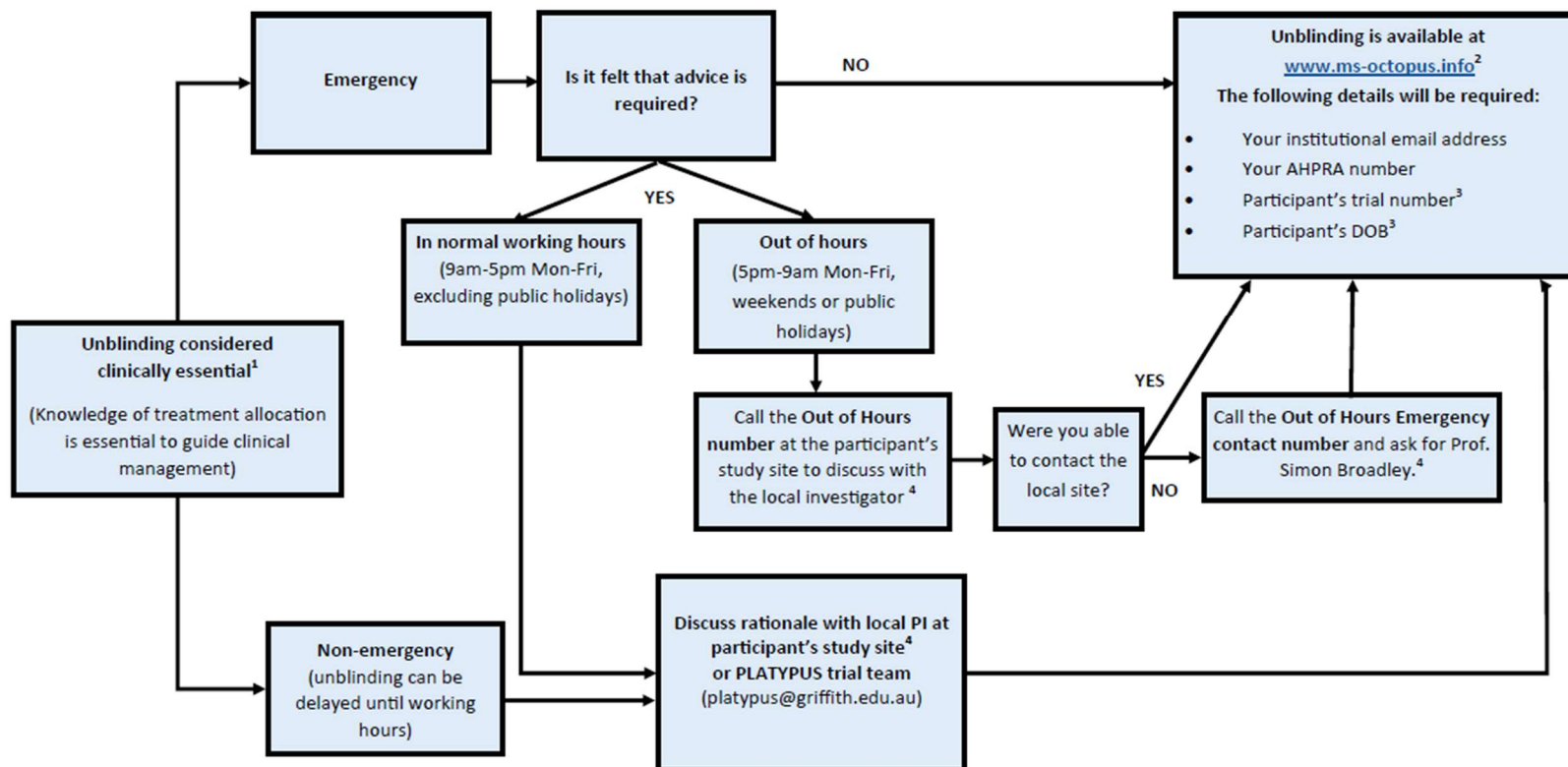


## Appendix 2: Flow chart summarizing unblinding process

### PLATYPUS Unblinding Process



#### Footnotes:

<sup>1</sup> Unblinding should only be performed where knowledge of treatment allocation is essential to guide clinical management and the patient cannot be managed without this knowledge. Please discuss with appropriate specialists where available.

<sup>2</sup> Please record reason for unblinding in participant's notes and restrict knowledge of treatment allocation to those who need to know. The PLATYPUS trial team will contact the unblinding doctor for further details if required.

<sup>3</sup> The participant's ID number can be found on their participation card, if available, or can be obtained from the trial team at the hospital site where they were recruited.

<sup>4</sup> Study site contact numbers and emergency out of hours contact number can be found on the participant's participation card.